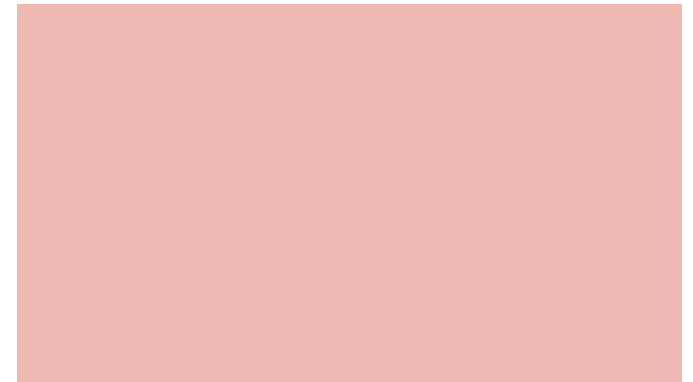
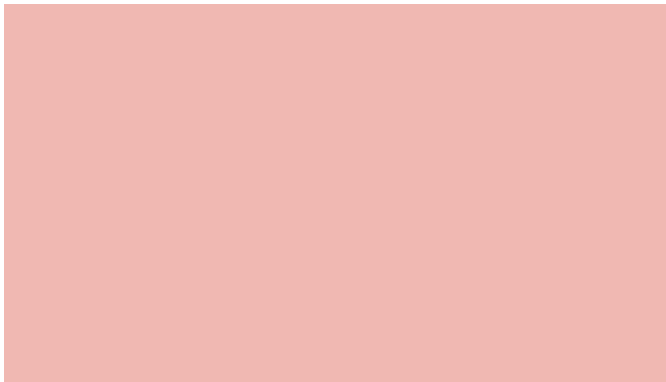
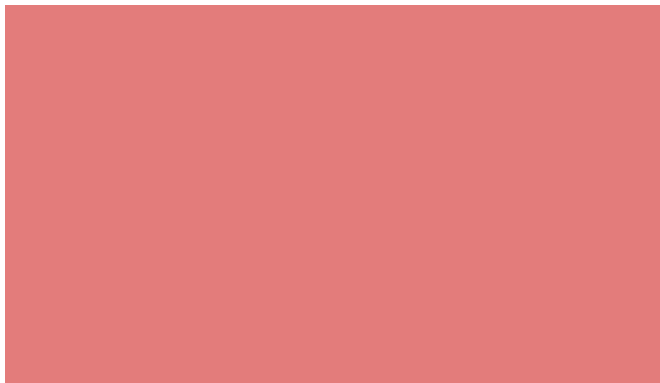
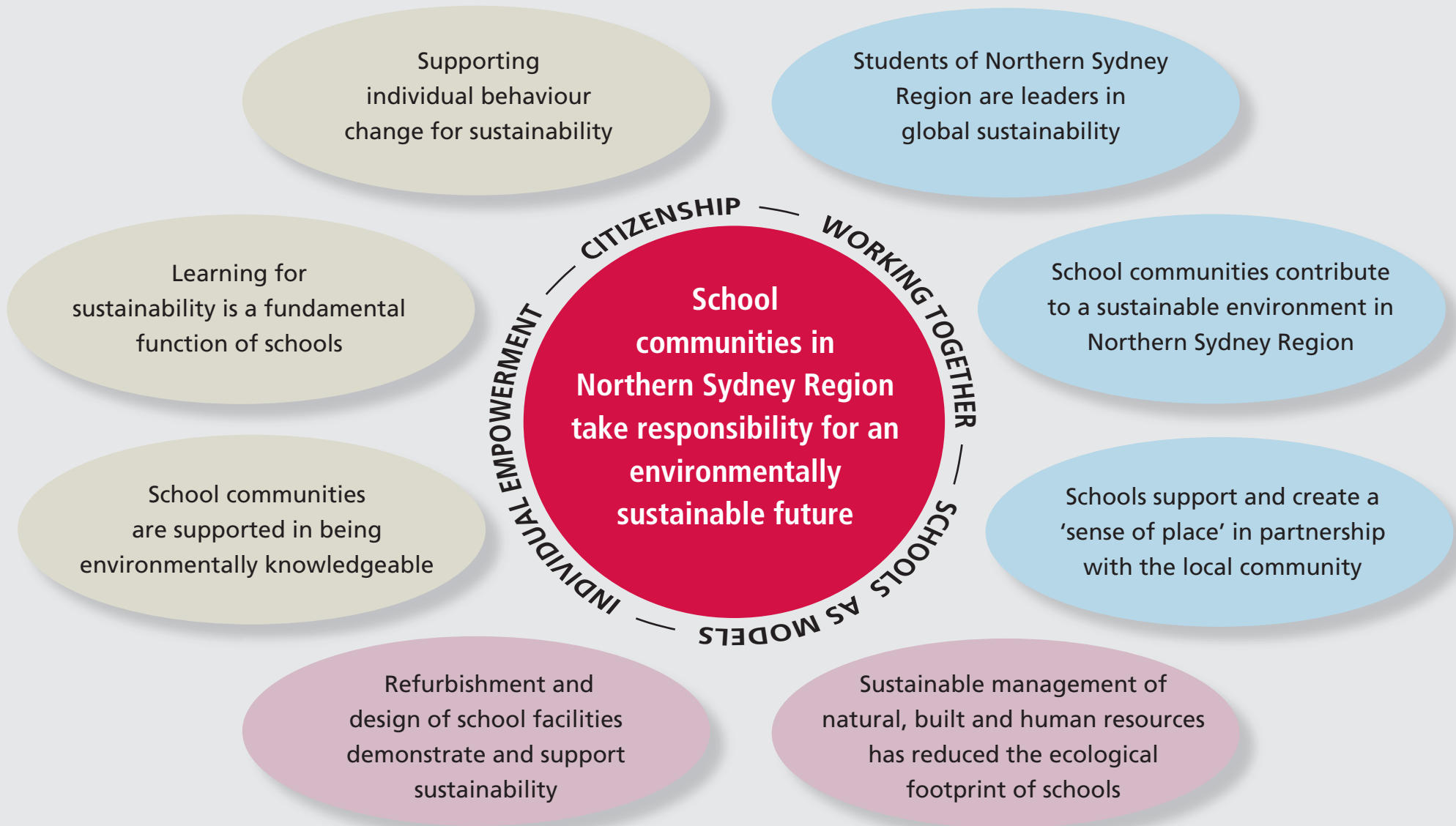


Northern Sydney Region – Leading Learning

Environmental Education and Sustainability Plan 2007–2010



SUSTAINABLE EDUCATIONAL PRACTICE



SUSTAINABLE EDUCATIONAL PRACTICE	STRATEGIC DIRECTIONS PRIORITY AREA	TARGETS for 2010	KEY STRATEGIES
<p>Learning for sustainability is a fundamental function of schools</p> <p>School communities are supported in being environmentally knowledgeable</p> <p>Supporting individual behaviour change for sustainability</p>	<p>Improving learning outcomes K-12</p>	<p>80% of schools are actively implementing the Environmental Education Policy through the curriculum</p>	<p>KEY STRATEGY 1 Integrating sustainability actions through the school curriculum and teaching programs <i>Outcome: Quality Teaching is embedded in Environmental Education programs in Northern Sydney Region schools.</i></p> <p>KEY STRATEGY 2 Professional Learning programs support the integration of environmental and sustainability practices in school and regional planning <i>Outcome: Schools in Northern Sydney Region are leaders in sustainability.</i></p>
<p>Students of Northern Sydney Region are leaders in global sustainability</p>	<p>Build and strengthen leadership capacity and capability</p>	<p>80% of schools in Northern Sydney Region with Environmental Management Committees</p>	<p>KEY STRATEGY 3 Promote and reward best practice in environmental education and sustainability in school communities <i>Outcome: Northern Sydney Region schools modelling best practice in environmental education and sustainability.</i></p>
<p>Schools support and create a 'sense of place' in partnership with the local community</p> <p>Schools communities contribute to a sustainable environment in Northern Sydney Region</p>	<p>Strengthen our partnerships and alliances</p>	<p>100% participation of local councils in Northern Sydney with formalised networks and partnerships with Northern Sydney Region Schools</p>	<p>KEY STRATEGY 4 Communication and Environmental Education Networks are developed with key stakeholders <i>Outcome: Schools will have established Environmental Management Committees and partnerships with local communities and environmental education centres.</i></p>
<p>Refurbishment and design of school facilities demonstrate and support sustainability</p> <p>Sustainable management of natural, built and human resources has reduced the ecological footprint of schools</p>	<p>Promote student leadership, social responsibility and harmony</p>	<p>Student representation on all Environmental and Sustainability Networks at a school and regional level</p> <p>Reduce the ecological footprint by 10% in Northern Sydney Region schools</p> <p>Environmental and sustainability priorities are integrated into regional asset management planning</p>	<p>KEY STRATEGY 5 Student Leadership Programs support environmental education and sustainability learning <i>Outcomes: Students will have an active role in the development and implementation of School Environmental Management Plans in schools. Students have a clear understanding of and commitment to environmental citizenship in school communities.</i></p> <p>KEY STRATEGY 6 Northern Sydney Region leads sustainable actions and best practice in asset planning and management <i>Outcome: School communities will be able to meet environmental challenges.</i></p>

Northern Sydney Region Our Vision

Our Vision

Inspiring and celebrating excellence; valuing and supporting our learning communities; creating a better future.

Our Values

Integrity, respect, excellence, responsibility, cooperation, participation, democracy, care, fairness.



Message from the Regional Director, Deonne Smith



I extend my congratulations to Northern Sydney Region school leaders (students, teachers and parents), local council environmental educators and members of the community who have contributed to the development of this plan.

Educating students for the challenges of an environmentally sustainable future is a profound responsibility.

The Environmental Education and Sustainability Plan 2007-2010 will guide schools in creating authentic learning opportunities for students which focus on the school and local environment as a learning context.

I encourage schools to further strengthen partnerships with local councils, through their common communities, and shared environmental goals, moving us forward in an environmentally sustainable manner for the benefit of the Northern Sydney community.

Thank you for your ongoing commitment to Leading Learning in Northern Sydney Region.

Deonne Smith